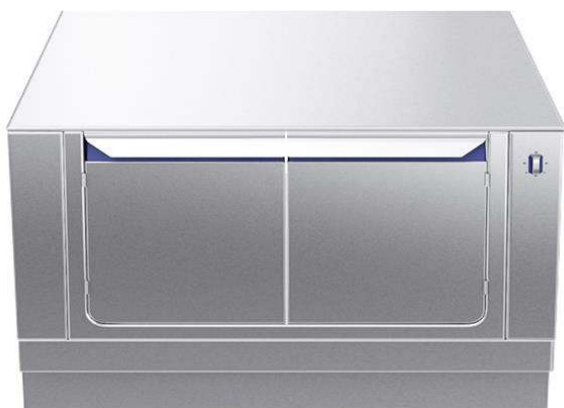


Modular Cooking Range Line
thermaline 80 - 1000mm Passth. Electric
Warming Cabinet, 4 doors, GN conform,
2 Sides(H2)-H=450

ITEM # _____
 MODEL # _____
 NAME # _____
 SIS # _____
 AIA # _____



588312 (MA4KCCJOAO)

Passthrough electric
 Warming Cabinet, with 4
 doors, two-side operated,
 GN - H2

Short Form Specification

Item No. _____

1000 mm wide passthrough warming cabinet with 4 doors. Internal frame for heavy duty sturdiness in stainless steel. Flat surface construction, easily cleanable. Temperature in the cabinet can be set through thermostat, up to a maximum of 110 ° C. Cabinet storage space accepts GN 1/1 containers. IPX5 water resistant certification. Configuration: Two-side operated freestanding base, hygienic class H2.

Main Features

- All major components may be easily accessed from the front.
- THERMODUL connection system creates a seamless work top when units are connected to each other thus avoiding soil penetrating vital components and facilitating the removal of units in case of replacement or service.
- Unit constructed according to DIN 18860_2 with 70 mm recessed plinth.
- Temperature in the cupboard can be set through a thermostat to suit different requirements. The maximum temperature is 110°C.
- Unit can be installed below modular top appliances, designed to keep plates warm.

Construction

- IPX5 water resistance certification.
- 2 mm top in 1.4301 (AISI 304).
- Flat surface construction with minimal hidden areas to easily clean all surfaces
- Storage space in the base of the appliance accepts GN1/1 containers.
- Internal frame for heavy duty sturdiness in stainless steel.

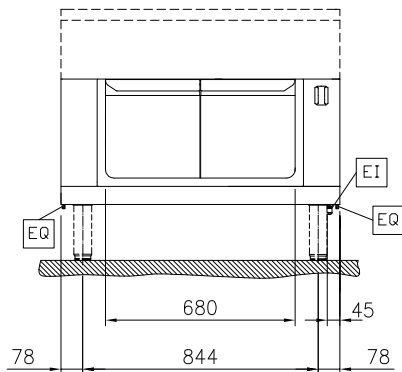
APPROVAL: _____



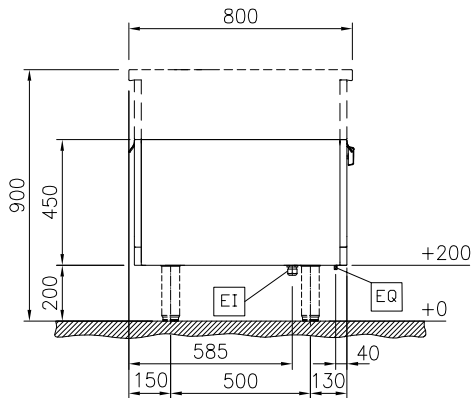
Electrolux
PROFESSIONAL

Modular Cooking Range Line
thermaline 80 - 1000mm Passth. Electric
Warming Cabinet, 4 doors, GN conform, 2
Sides(H2)-H=450

Front

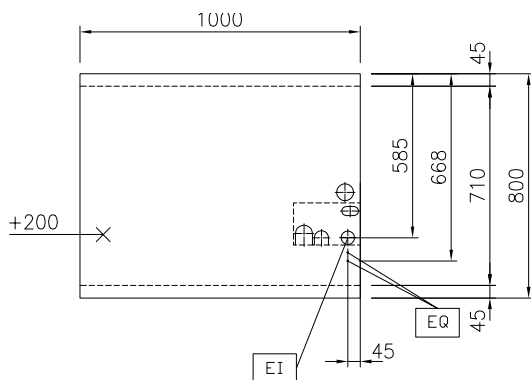


Side



EI = Electrical inlet (power)

Top



Key Information:

External dimensions, Width:	
588312 (MA4KCCJOAO)	1000 mm
External dimensions, Depth:	800 mm
External dimensions, Height:	450 mm
Cupboard Cavity Dimensions (width):	680 mm
Cupboard Cavity Dimensions (height):	330 mm
Cupboard Cavity Dimensions (depth):	710 mm
Cabinet temperature range:	30-110 °C
Net weight:	34 kg

Sustainability

Current consumption:	5 Amps
----------------------	--------



Modular Cooking Range Line
thermaline 80 - 1000mm Passth. Electric Warming Cabinet, 4 doors, GN
conform, 2 Sides(H2)-H=450
The company reserves the right to make modifications to the products
without prior notice. All information correct at time of printing.

2025.11.28

Optional Accessories

- Stainless steel side panel, 800x700mm, freestanding PNC 912509 ☐
- Stainless steel front kicking strip, 1000mm width PNC 912636 ☐
- Stainless steel side kicking strip left and right, freestanding, 800mm width PNC 912655 ☐
- Stainless steel plinth, freestanding, 1000mm width PNC 912865 ☐
- Perforated shelf for warming cabinets and cupboard bases (one-side operated TL80-85-90 and two-side operated for TL80) PNC 913235 ☐
- Energy optimizer kit 14A - factory fitted PNC 913244 ☐
- Side reinforced panel only in combination with side shelf, for freestanding units PNC 913258 ☐
- Shelf fixation for TL80-85-90 one-side operated, TL80 two-side operated PNC 913283 ☐
- Stainless steel dividing panel, 800x700mm, (it should only be used between Electrolux Professional thermaline Modular 80 and thermaline C80) PNC 913668 ☐
- Stainless steel side panel, 800x700mm, flush-fitting (it should only be used against the wall, against a niche and in between Electrolux Professional thermaline and ProThermetic appliances and external appliances - provided that these have at least the same dimensions) PNC 913684 ☐